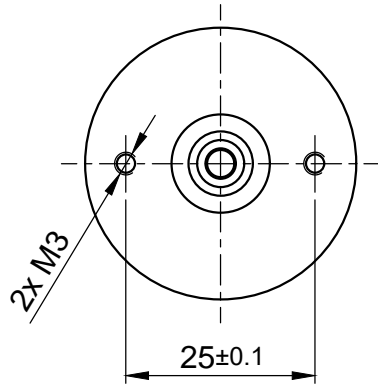
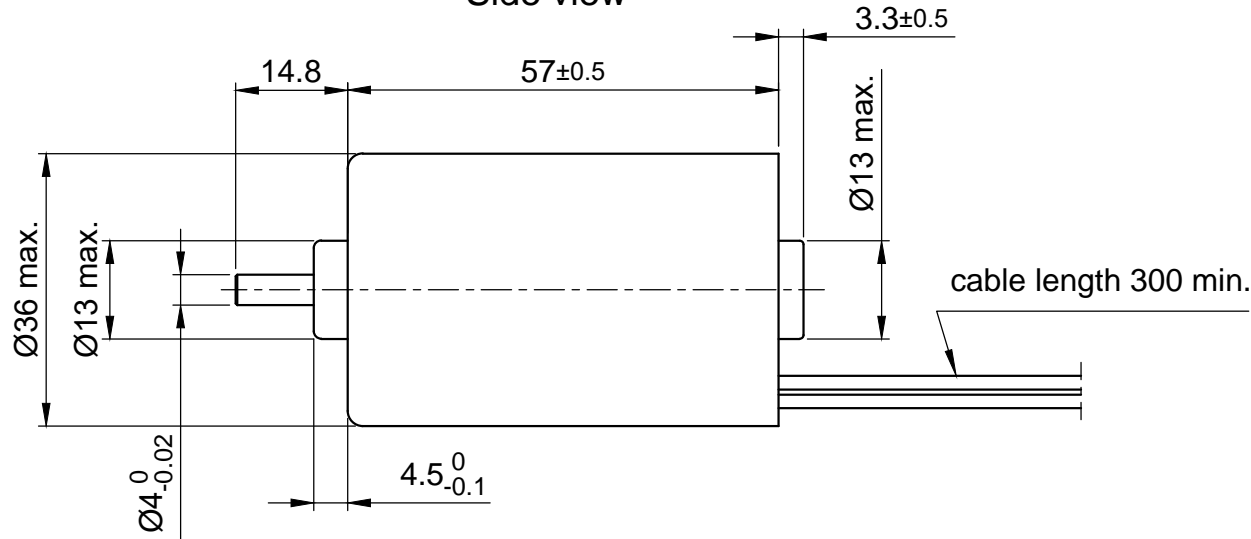


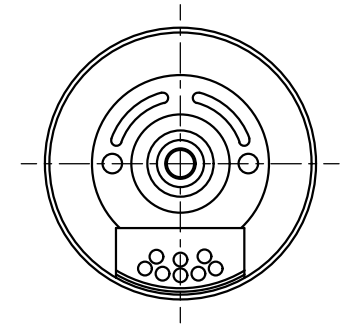
Front view and mounting



Side view

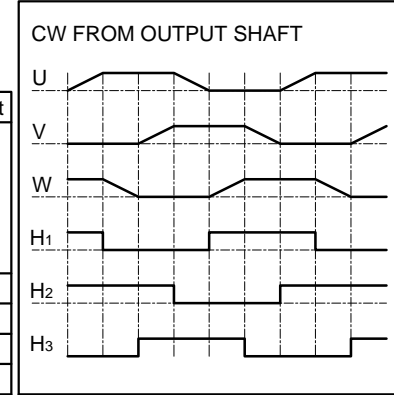
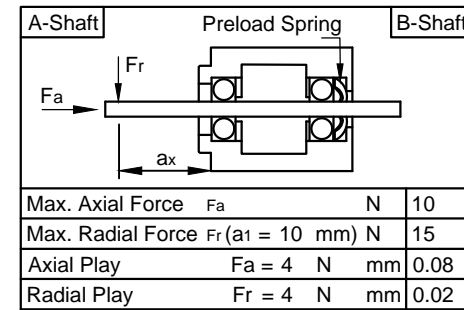


Rear view



MOTOR SPECIFICATION			
No. of Poles		8	
Rated Voltage	V DC	24	
Current - Rated / Peak	A	1.9	5.7
Resistance Phase to Phase	±15% Ω	1.1	
Inductance Phase to Phase (1kHz)	±20% mH	1.2	
Torque - Rated / Peak	Nm	0.07	0.21
Torque Constant	Nm/A	0.0368	
Power - Rated	W	33	
Speed - No Load / Rated	±10% rpm	5700	4500
Rotor Inertia	kg m ²	2.7	x10 ⁻⁶

WIRING DIAGRAM			
	Colour	Function	Lead Gauge
Motor 8 pol.	YE	U	UL1430 AWG24
	BN	V	
	OG	W	
Hall 24 Impl. per Rev.	RD	+5V	UL1430 AWG26
	BU	H1	
	GN	H2	
	WH	H3	
	BK	GND	



GENERAL MOTOR SPECIFICATION				ISO 8015	ISO 1302	ISO 2768-1 cK	ISO 13715	Weight: 0.25 kg	
Ambient Temperature	°C	Min. -10	Max. 50				Date	Name	
Max. Temperature Rise (at standstill - 2 phases energized)	°C	80					Drawn	04.12.2017	Import
Max. Ambient Humidity (non condensing)	%	85					Checked	18.01.2018	Seimel_G
Insulation Class		B					Approved	19.01.2018	Seimel_G
Insulation Resistance	MΩ	100		01	Uppt. Rotor Inertia	Seimel_G	19.01.2018	DBL36L024045-A	
Dielectric Strength (for 1 min - coil to case)	V AC	600		REV	Rev. Text	Name	Rel. Date		
								03000160	
								State: Released	
								Rev: 01	
								P	

